

# Test report

**Number:** T251-0307/21 **Project file:** C20203092  
**Date:** 2021-05-17  
**Pages:** 97

**Product:** Switch Mode Power Supply

**Type reference:** E2xFzWy 24  
E2xFzWy\_aaa 30  
See pages 6.

**Ratings:** See page 5.

**Trademark:** **EGSTON** or **Pulse**

**Applicant:** EGSTON System Electronics Eggenburg GmbH  
Grafenberger Strasse 37, 3730 Eggenburg, Austria

**Manufacturer:** EGSTON System Electronics Eggenburg GmbH  
Grafenberger Strasse 37, 3730 Eggenburg, Austria

**Place of manufacture:** EGSTON System Electronic spol.s.r.o.  
Průmyslova 20, 670 15 Znojmo, Czech Republic

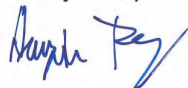
## Summary of testing

**Testing method:** 47 CFR Part 15, Subpart B (Clause 15.107 and 15.109)  
in conjunction with ANSI C63.4:2014  
ICES-003 Issue 7 in conjunction with ANSI C63.4:2014

**Testing location:** SIQ Ljubljana, Mašera-Spasičeva ulica 10, SI-1000 Ljubljana, Slovenia

**Remarks:** Date of receipt of test items: 2020-11-18, 2020-12-09 (initial testing),  
2021-02-26, 2021-05-03, 2021-04-01, 2021-05-03 (Rev. 1.0)  
Number of items tested: 8 (initial testing), 5 (Rev. 1.0)  
Date of performance of tests: 2020-12-16 - 2021-02-10 (Initial testing),  
2021-05-04 – 2021-05-11 (Rev. 1.0)  
The test results presented in this report relate only to the items tested.  
The product complies with the requirements of the testing methods.

**Tested by:** Damjan Repar



**Approved by:** Marjan Mak



*The report shall not be reproduced except in full.*



<b>CONTENTS</b>	<b>page</b>
<b>1 GENERAL</b>	<b>3</b>
1.1 EQUIPMENT UNDER TEST	5
1.2 GENERAL PRODUCT INFORMATION	5
1.3 ANSI C63.4 SUBPART SELECTION	17
1.4 CLASS STATEMENT REQUIREMENTS	17
1.5 OCCUPIED BANDWIDTH MEASUREMENT	17
1.6 QUASI-PEAK DETECTOR	17
1.7 PEAK, RMS, AND AVERAGE DETECTORS	17
<b>2 LIMITS FOR ALL SUBPARTS</b>	<b>18</b>
2.1 SUBPART B: UNINTENTIONAL RADIATORS	18
2.2 SUBPART C: INTENTIONAL RADIATORS	20
<b>3 ALL TEST EQUIPMENT AND THEIR DESCRIPTION</b>	<b>21</b>
3.1 GENERAL INFORMATION	21
3.2 OTHER INSTRUMENT INFORMATION AND AUXILIARY EQUIPMENT	22
<b>4 CONVERSION FACTORS AND ALL OTHER FORMULAS</b>	<b>42</b>
<b>5 GENERAL AND SPECIAL CONDITIONS DESCRIPTION</b>	<b>43</b>
5.1 GENERAL CONDITION DESCRIPTION	43
5.2 SPECIAL CONDITION DESCRIPTION	46
<b>6 TEST SUMMARY</b>	<b>47</b>
6.1 OPERATING VOLTAGES/FREQUENCIES USED FOR TESTING	47
6.2 OPERATING MODES USED FOR TESTING	47
<b>7 EMISSION TESTS</b>	<b>48</b>
7.1 CONDUCTED EMISSION MEASUREMENT (UNINTENTIONAL RADIATOR)	48
7.2 RADIATED EMISSION MEASUREMENT (UNINTENTIONAL RADIATOR)	67

## 1 GENERAL

History sheet			
Date	Report No.	Change	Revision
2021-02-24	T251-0079/21	Initial Test Report issued.	--
2021-05-17	T251-0307/21	Update of the initial test reports due to inclusion of 5-11.9 V 30 W models with PE and 5-24 V 30 W models without PE (plug-in) to cover complete E2xFzWy_aaa 30 family.  After review complete testing was considered necessary for E2DFxWy_E 30 (5V/3A), E2DFxWy_F 30 (5V/3A), E2EFxWy 30 (24V/1.25A), E2EFxWy 30 (12V/2.5A), E2EFxWy 30 (5V/3.0A) models.	1.0

### Environmental conditions:

Ambient temperature: 15 °C to 35 °C

Relative humidity: 30 % to 60 %

Atmospheric pressure: 860 mbar to 1060 mbar

### Measurement uncertainty:

Emission test		U <sub>LAB</sub>	U <sub>CISPR</sub>
Conducted emission	(150 kHz to 30 MHz)	3.2 dB	3.4 dB
Radiated emission	(30 MHz to 1000 MHz)	4.2 dB	6.3 dB

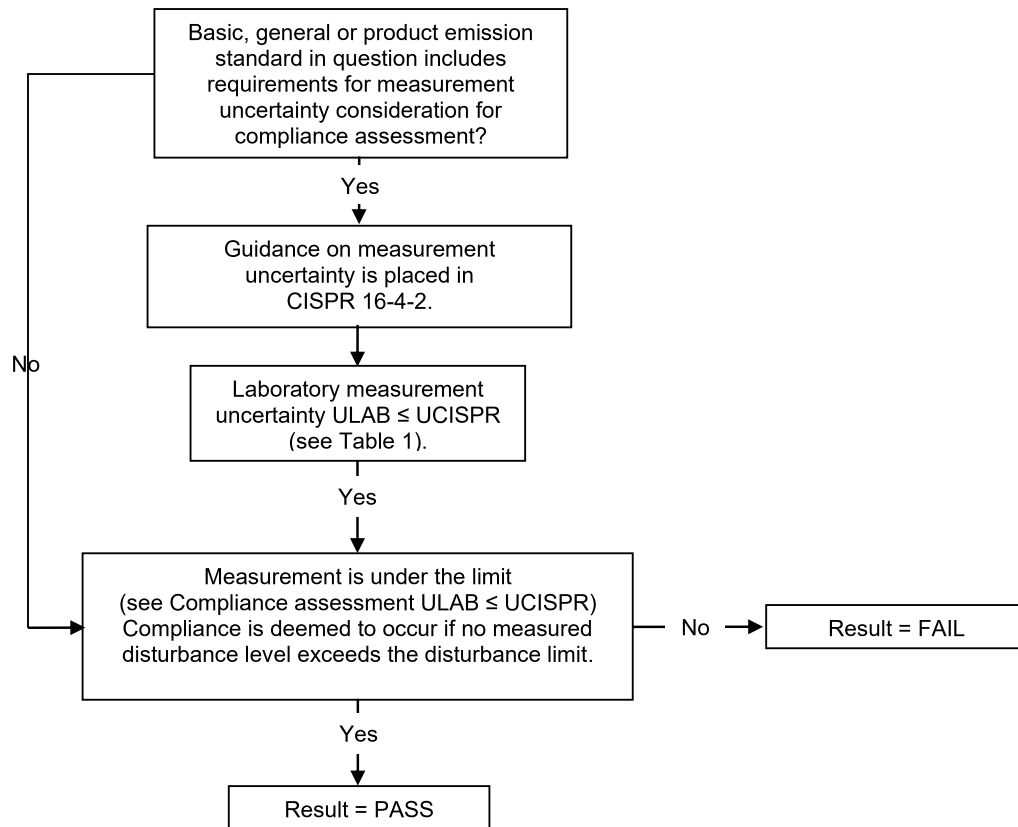
### Application of decision rule

Application of decision rule and statement of conformity is defined in document TN023 Decision rule and measurement uncertainty.

As a general rule, Pass/Fail decisions are based on simple acceptance rule and acceptance limits chosen based on simple acceptance ( $w = 0$ ,  $AL = TL$ ) except if a decision rule is governed by particular standard or guidance document.



**Decision rule applicable for emission**



## 1.1 Equipment under test

### Switch Mode Power Supply

Type:

**24W power supply without PE (plug-in):** E2EFSW3 24 (30V/0.8A), E2EFSW3 24 (24V/1.0A), E2EFSW3 24 (12V/2.0A), E2EFSW3 24 (5V/3.0A)

**30W power supply without PE (plug-in):** E2EFSW3 30 (24V/1.25A), E2EFSW3 30 (12V/2.5A), E2EFSW3 30 (5V/3.0A)

**30W power supply with PE (desktop):** E2DFSW3\_E 30 (24V/1.25A), E2DFSW3\_FL 30 (24V/1.25A), E2DFSW3\_E 30 (12V/2.5A), E2DFSW3\_F 30 (12V/2.5A), E2DFSW3\_E 30 (5V/3A), E2DFSW3\_F 30 (5V/3A)

## 1.2 General product information

The product is a family of switch mode power supplies intended for installation in the end medical device, IT or household equipment. Power supply can be provided in many different configurations which are described in the ordering information.

### Ratings:

#### E2xFzWy 24

Input:

100-240 Vac; 50-60 Hz; 490 mA

Output:

Output voltage: 5-30 Vdc

Output current: Max. 3,0 A

Output power: Max. 24 W

Protection class: II

#### E2xFzWy\_aaa 30

Input:

100-240 Vac; 50-60 Hz; 590 mA

Output:

Output voltage: 5-24 Vdc

Output current: Max. 3 A

Output power: Max. 30 W

Protection class: I (models with option \_E, \_F or EF), II (models without options).



**Ordering information for 24 W switch mode power supply:**

**E2xFzWy 24**

Where "x" can be:

E= Euro Plug-in

U= US, Canada Plug-in

G= United Kingdom Plug-in

C= Changeable Plug

S= Cable-cable

P= PCB Module

O= Open Frame Version

Where "y" can be 1 or 3 to denote output tolerance in %

Where "z" can be:

S=standard power supply

M= medical power supply unit

H= household power supply

**Ordering information for 30 W switch mode power supply:**

**E2xFzWy\_aaa 30**

Where "x" can be:

E= Euro Plug-in

U= US, Canada Plug-in

G= United Kingdom Plug-in

A= Australia Plug-in

C= Changeable Plug

D= Desktop

S= Cable-cable

P= PCB Module

O= Open Frame Version

T= Terminal Version

Where "y" can be 1 or 3 to denote output tolerance in %

Where "z" can be:

S= standard power supply

M= medical power supply

H= household power supply

Where "a" can be:

Blank or

L = With power on LED on mainboard

(available for all housing variants)

E = Protective earth connected to output

(available only for desktop version)

F = Floating protective earth

(PE is connected between the 2-Y capacitors - available only for desktop version)

and is denoting additional options (all 3 combinations possible)